



2 O'Meara Street Wodonga VIC

3 2 2

A compact home located in Whitebox Rise Estate close to facilities including doctors, schools, Woolworths and Aldi shopping complex and public transport at your doorstep.

This lovely three bedroom and two-bathroom home is only 11 years old and conveniently situated.

The kitchen features electric cooking, built-in pantry, with adjacent dining and open plan living space.

A thoughtful floorplan with the primary bedroom, walk-in wardrobe and ensuite located to the front and the other 2 bedrooms both with built-in wardrobes are down the side of the home separated by the main full bathroom.

Comfort is controlled with a main split system in the living area that provides heating and cooling.

The open plan feeling is complimented in the kitchen and dining area by the large windows letting in natural daylight and overlooking the low maintenance rear yard.

Many an afternoon can be spent entertaining friends and

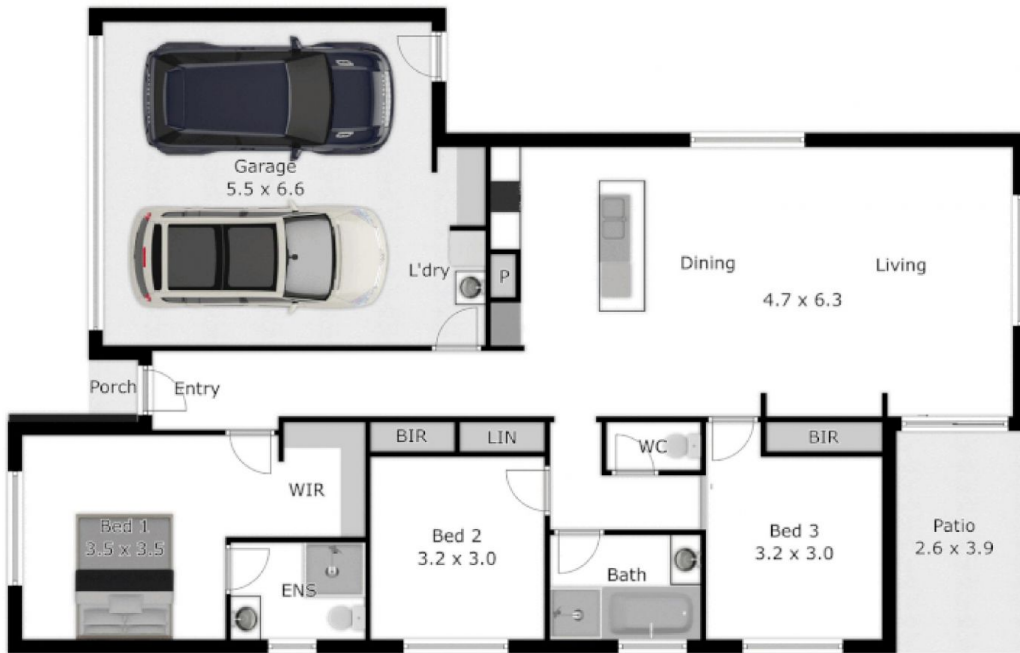
Price : \$ 465,000

Land Size : 491 sqm

View : <https://www.wodongarealestate.com.au/sale/vic/north-eastern/wodonga/residential/house/7285167>



Silviya Saric
0260 561 888



APPROX. INTERIOR LIVING AREA
 116.4 sq. m
 Measurements are an approximate guide only.
 Not to scale.