



38 Peeler Street Wodonga VIC

3 2 2

Constructed by renowned local builder John Sechold this tidy home will endure with its craftsmanship. Some of the top shelf features include:

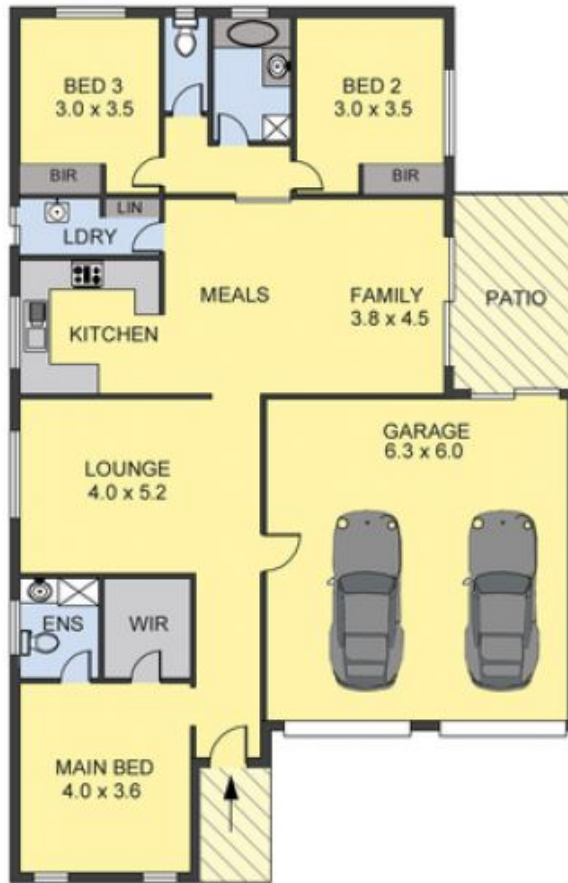
- ? High gloss kitchen with 900mm stainless steel oven, cooktop, and dishwasher
- ? Two spacious living zones of lounge and separate tiled family room
- ? Master bedroom with en-suite and walk in robe
- ? Comforts of gas ducted heating and evaporative cooling throughout
- ? Good size alfresco area for entertaining
- ? Double lock up garage with remote and internal access
- ? Private and secure low maintenance 512m² allotment
- ? Side/rear yard access

For investors expected rental return of \$450 - \$480 per

Price : \$ 485,000
Land Size : 512 sqm
View : <https://www.wodongarealestate.com.au/sale/vic/north-eastern/wodonga/residential/house/7325131>



Clinton Harvey
0260 561 888



Scale in metres. Indicative only. Dimensions are approximate.
 All information contained herein is gathered from sources we believe to be reliable. However, we cannot guarantee its accuracy and interested persons should rely on their own enquiries.

AREA

LIVING	: 120.00 sq.m(Approx)
GARAGE	: 37.80 sq.m(Approx)
ENTRANCE/PATIO	: 11.00 sq.m(Approx)



38 PEELER