



8/2 Bowman Court Wodonga VIC

2 1 1

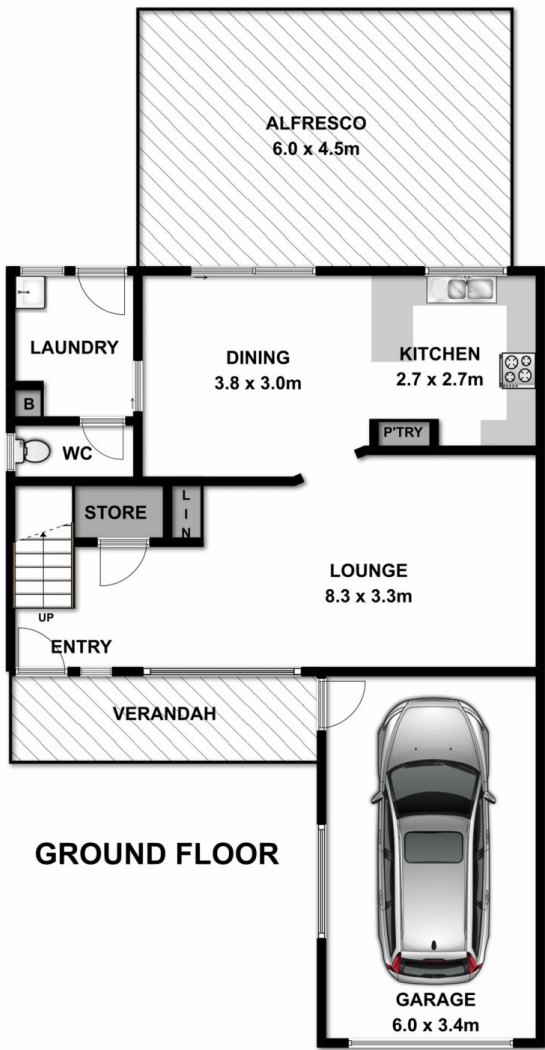
This quiet and private townhouse cannot be compared to a standard residential Wodonga unit. The total features easily rise above the rest and comprise:

- ? A very practical layout/floorplan with upstairs an additional living/utility area central to the two bedrooms
- ? Upstairs balconies to both bedrooms offering views, main bedroom with walk in robe
- ? Large main bathroom with spa, two toilets one each both upstairs and downstairs
- ? Entertainers kitchen with gas hot plates and dishwasher
- ? Comforts of gas wall furnace and ducted evaporative cooling
- ? Generous outdoor area accompanied by a spacious 359m² low maintenance back yard
- ? Currently let at \$325 per week to an excellent tenant or can be purchased with vacant possession
- ? Located so conveniently close to shops, schools, leisure

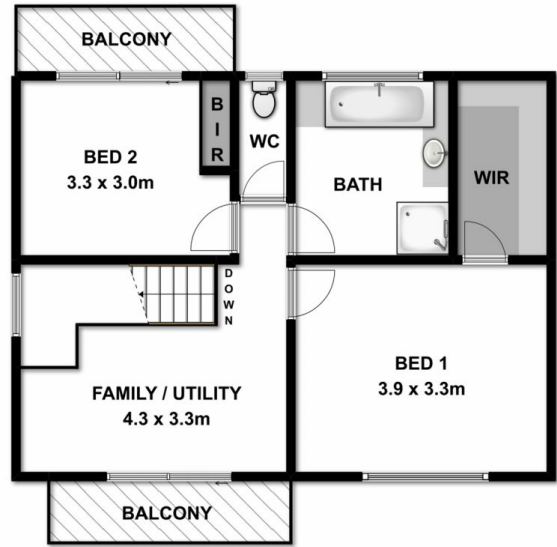
Land Size : 359 sqm
View : <https://www.wodongarealestate.com.au/sale/vic/north-eastern/wodonga/residential/unit/7529578>



Clinton Harvey
0260 561 888



GROUND FLOOR



FIRST FLOOR

Measurements are approximate. Not to scale. For illustrative purposes only.