



1-4/6 Charles Street Wodonga VIC

6 4 4

This block of units in Wodonga presents an excellent investment opportunity, particularly given its prime location and solid rental returns.

Here are some key highlights:

Property Overview:

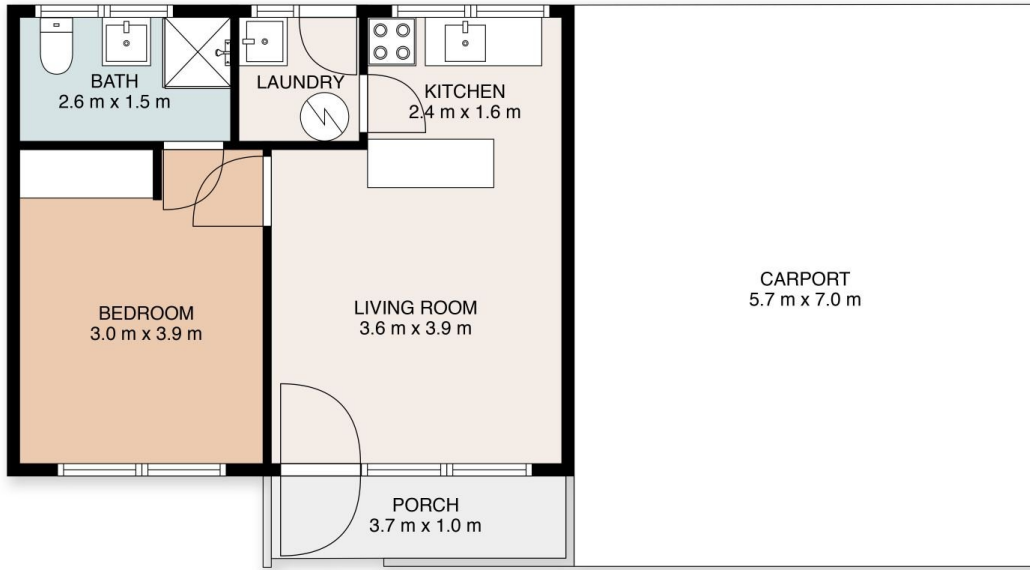
- * Location: Central Wodonga, less than 1km from Junction Place development and Wodonga Plaza shopping precinct.
- * Lot Size: 837m² (approx).
- * Units:
 - 1 x 3 bedroom unit with gas cooking.
 - 3 x 1 bedroom units with electric cooking.
- * Construction: Brick, solidly built.
- * Current Rental Return: Approximately 6.5% gross on the marketing price, currently returning \$960 per week and increasing to \$1,040 per week in October 2024.

Features:

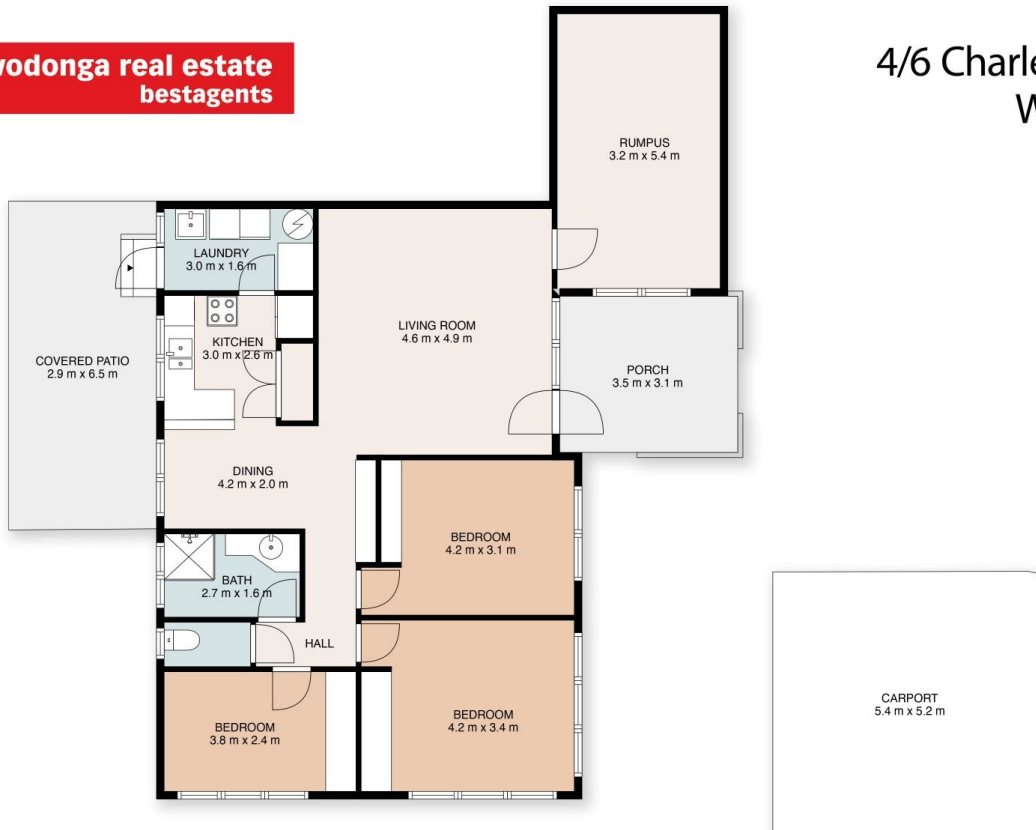
Price : \$759,000
Land Size : 837 sqm
View : <https://www.wodongarealestate.com.au/sale/vic/north-eastern/wodonga/residential/block-of-units/8066353>



Silviya Saric
0260 561 888



This floor plan including dimensions are approximate and are for illustrative purposes only and should be used purely as a guide. No guarantee can be given to accuracy of the information contained, and interested parties should conduct their own enquires.



This floor plan including dimensions are approximate and are for illustrative purposes only and should be used purely as a guide. No guarantee can be given to accuracy of the information contained, and interested parties should conduct their own enquires.