



28 Lees Crescent Bellbridge VIC

2 2 2

Nestled in the picturesque town of Bellbridge, 28 Lees Crescent is in an absolutely unbeatable waterfront location.

Imagine waking up every morning just a short stroll away from the stunning Hume Weir, where serene waters and breathtaking views await.

For those who value peace and quiet, this location is an absolute gem.

Currently comprising a two bedrooms, main with ensuite, second bedroom with study, and an open plan kitchen, dining and living area, on a well-proportioned 559m2 (approx.) block.

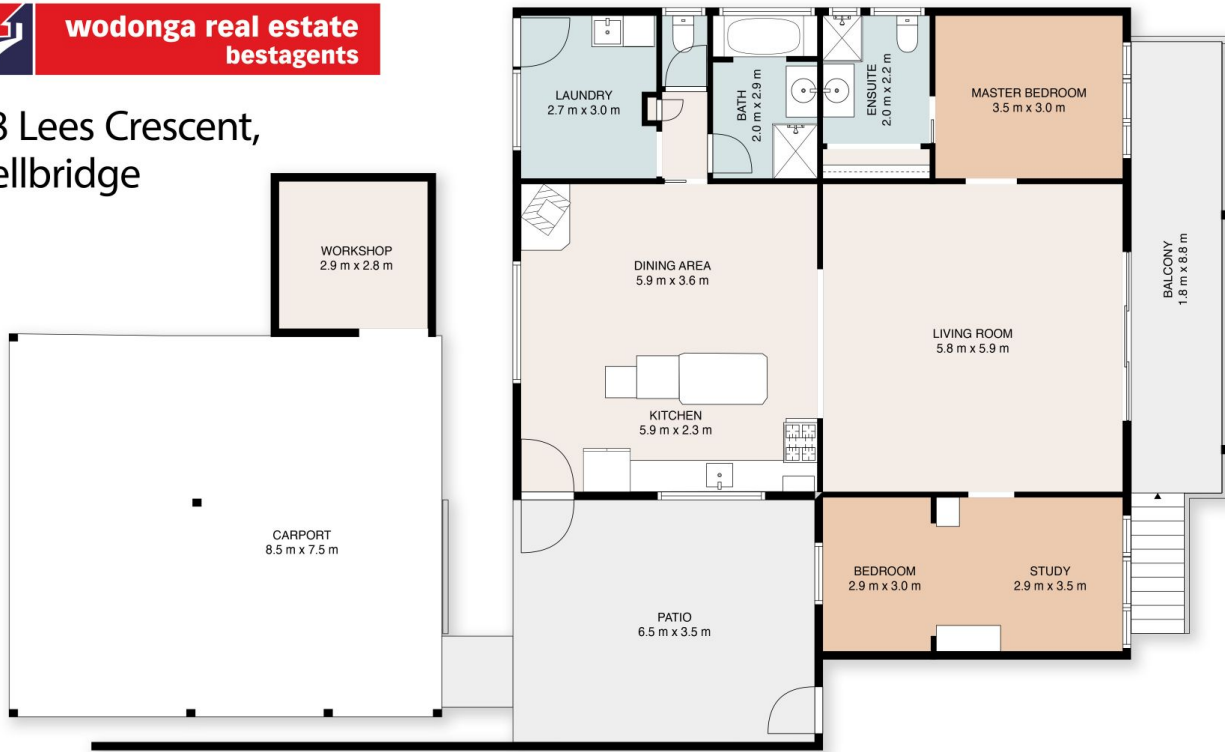
Type : House
Price : \$569,000
Land Size : 559 sqm
View : <https://www.wodongarealestate.com.au/sale/vic/north-eastern/bellbridge/residential/house/8161469>



Silviya Saric
0260 561 888

[For full version visit the website](https://www.wodongarealestate.com.au)

28 Lees Crescent, Bellbridge



This floor plan including dimensions are approximate and are for illustrative purposes only and should be used purely as a guide. No guarantee can be given to accuracy of the information contained, and interested parties should conduct their own enquires.